



# GAT MONTHLY MEMBERSHIP PROGRESS REPORT

Results as of: 6/30/2022

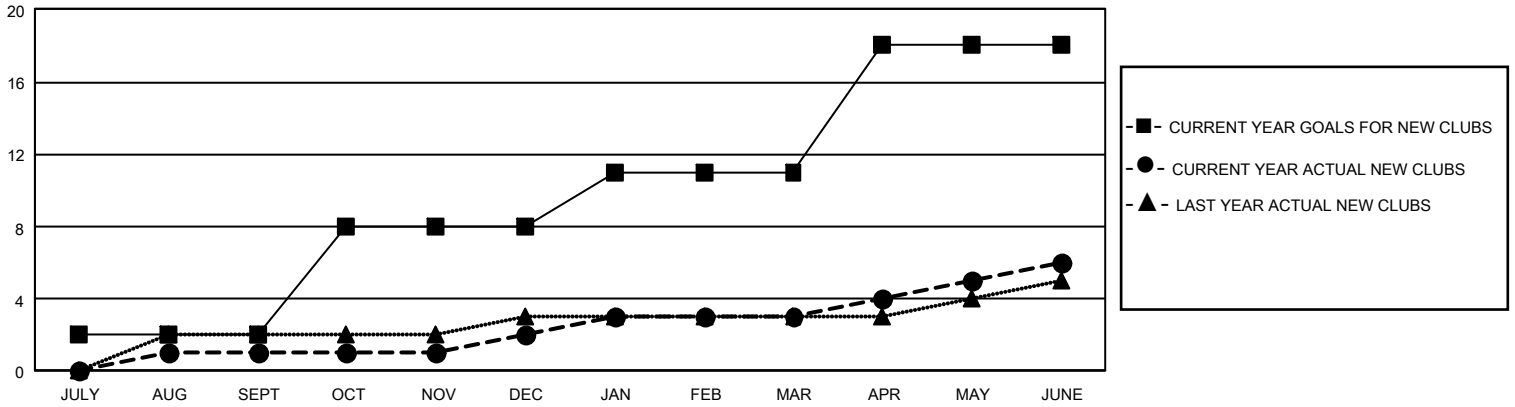
## GMT Constitutional Area 1, Group N

REPORT DOES NOT INCLUDE CLUBS IN UNDISTRICTED AREAS.

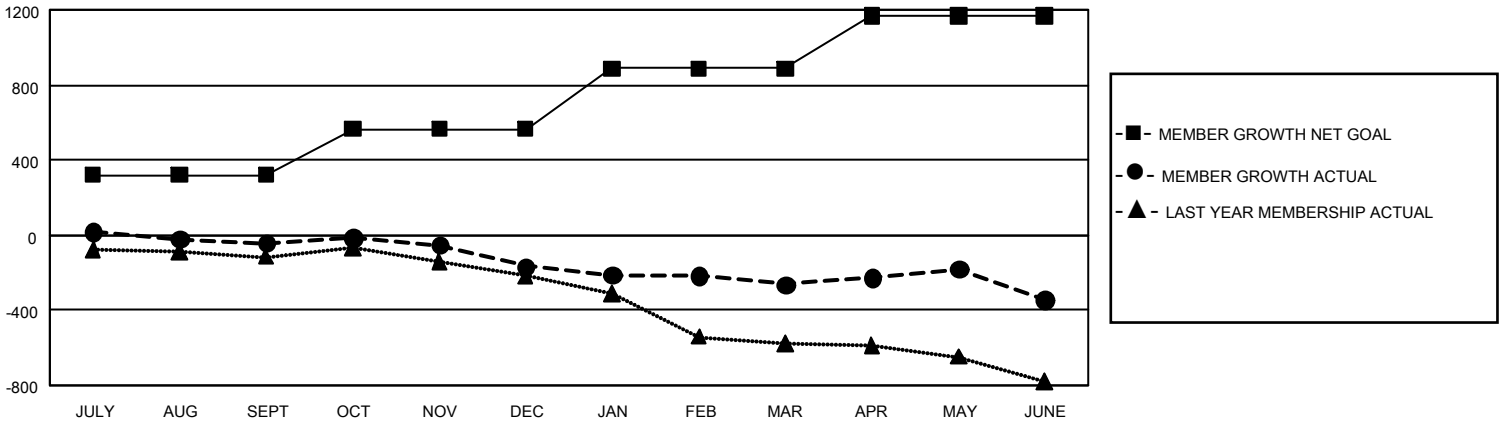
Clubs			
RESULTS FOR 2021-2022			
QUARTER	NEW CLUB GOAL	NEW CLUBS	DROPPED CLUBS
JULY/AUG/SEPT	6	1	7
OCT/NOV/DEC	18	1	4
JAN/FEB/MAR	9	1	2
APR/MAY/JUNE	21	3	11

Members			
RESULTS FOR 2021-2022			
QUARTER	MEMBER GROWTH NET GOAL	MEMBER GROWTH ACTUAL	DROPPED MEMBERS ACTUAL (including transfers)
JULY/AUG/SEPT	319	441	455
OCT/NOV/DEC	247	341	441
JAN/FEB/MAR	320	350	404
APR/MAY/JUNE	282	622	661

GOALS AND ACTUAL NEW CLUBS CUMULATIVE



GOALS AND ACTUAL MEMBERS CUMULATIVE



DROPPED CLUBS: 24	321 CLUBS OF 562 ADDED 1 OR MORE NEW MEMBERS	<u>GENDER DISTRIBUTION</u>	
<u>DROPPED MEMBERS</u>		MALE	7,887 (64.69%)
DECEASED	248	FEMALE	4,303 (35.29%)
CLUB CANCELLED	178	NON BINARY	1 (0.01%)
OTHER	1,535	PREFER NOT TO ANSWER	1 (0.01%)
TOTAL	1,961	TOTAL FAMILY UNIT MEMBERS	2,387
	<a href="#">CLICK HERE FOR CUMULATIVE MEMBERSHIP DATA</a>	FAMILY MEMBERS PAYING HALF DUES	1,225